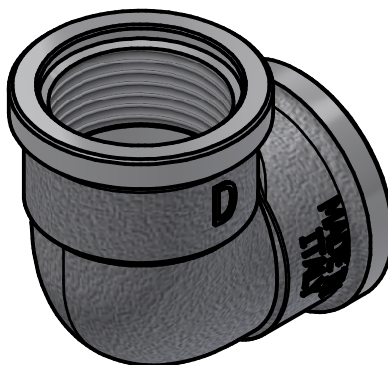
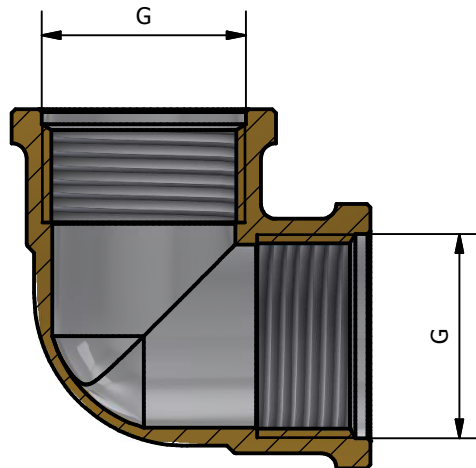
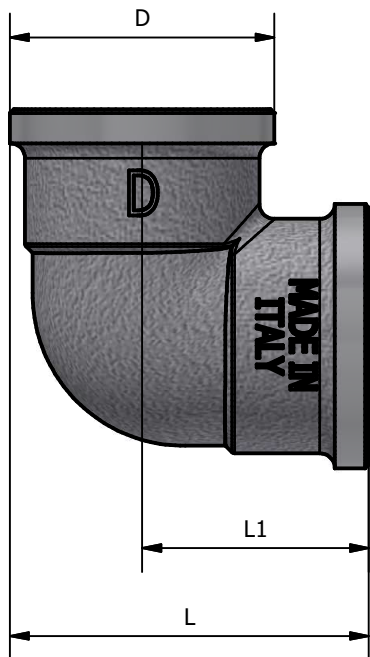


A-A (1 : 1)



CODE	SIZE	G	D	L	L1
200HN 12	1/2	1/2	28,5	38,75	24,5
200HN 34	3/4	3/4	34	45	28
200HN 01	1"	1"	42	55,5	34,5

CONFORMITY	
1)	DM 174 del 6 Aprile 2004
2)	UNI EN ISO 228
3)	UNI EN 1254-4
4)	UNI EN 9227
5)	UNI EN 2819

WORKING PRESSURE MAX	16 BAR
WORKING TEMPERATURE MAX	120°C

01	Aggiunto curva 1"	Delaini M.	29/11/2021
00	Prima emissione	Delaini M.	31/08/2015
Rev.	Nota Revisione	Approvatore	Data Approvazione
Toll Gen:	JS13	Stato sup.:	Nichelato
Filetto:	ISO 228	Note tecniche:	
Peso lavorato:	Peso grezzo:	N° stampo:	
Materiale: CW 617N EN12165		Disegnatore: Delaini P.	Data: 31/08/2015
TDM Brass s.r.l via Artigiani , 7-9 25030 Maclodio BS Italy tel +39 030 9972217 fax 030 9787089 www.tdmbrass.it email info@tdmbrass.it			

Codice: 200HN scheda

Descrizione: Heavy elbow F/F Nickel plated

TDMBRASS
ITALIAN FITTINGS